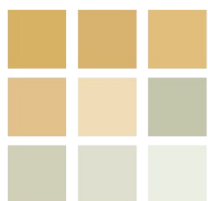




pearson
ferrier®



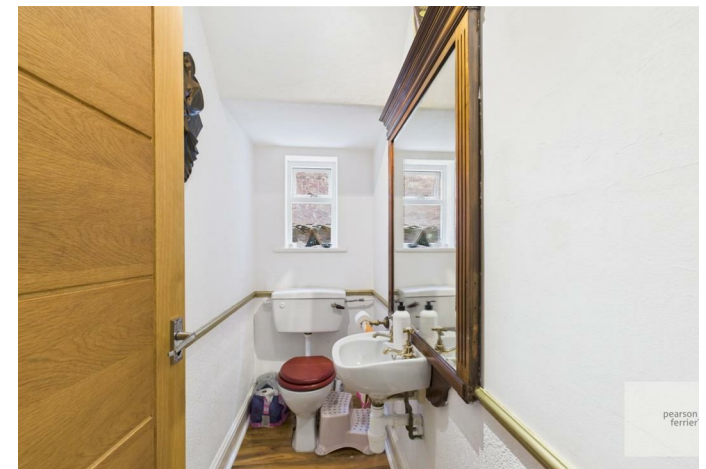
17 CROFTLANDS
Ramsbottom, BL0 9SD
£525,000

17 CROFTLANDS

Property at a glance

- large modern detached house
- five bedrooms/two bathrooms
- head of cul-de-sac
- large gardens & patio areas
- popular location
- close to schools and amenities

Croftlands, Ramsbottom is a substantial five bedroom detached house set in a large corner plot at the head of this cul-de-sac, in this popular residential location within walking distance to extensive local amenities, schools, shops and bus routes and a short drive onward to the motorway network. The house has been extended by the present owners and has a spacious interior warmed by gas fired central heating and is PVC double glazed. The accommodation briefly comprises; entrance hall with guests wc/cloaks, lounge & snug, study/potential bedroom, dining kitchen, first floor, five bedrooms the main with an ensuite shower room and additional family bathroom. Outside there is a large parking forecourt and integral garage and enclosed rear patio and large side lawn and further patio. Leasehold Property unexpired term of 999 years/Council Tax band F







Floor 0



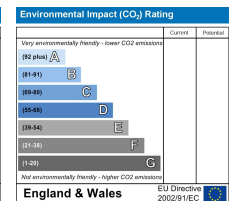
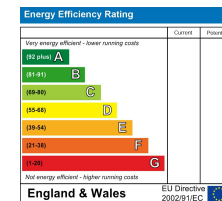
Floor 1

Approximate total area^m
148.8 m²

(1) Excluding balconies and terraces

Calculations reference the RICS IPMS 3C standard. Measurements are approximate and not to scale. This floor plan is intended for illustration only.

GIRAFFE360



Ramsbottom Office
11 Bolton Street, Ramsbottom, BL0 9HU
Telephone: 01706 822630
Fax: #
Email: ramsbottom@pearsonferrier.co.uk

www.pearsonferrier.co.uk



All statements contained in these particulars are for indicative purposes only and are made without responsibility on the part of Pearson Ferrier and the vendors of this property and are not to be relied on as statements or representations of fact. Potential purchasers should satisfy themselves by inspection or otherwise as to the accuracy of such details contained in these particulars.